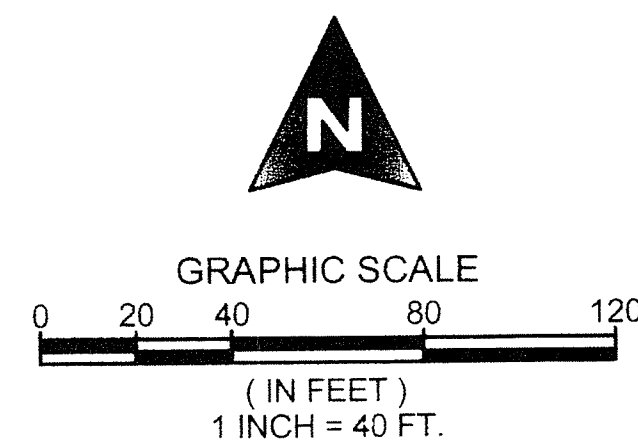


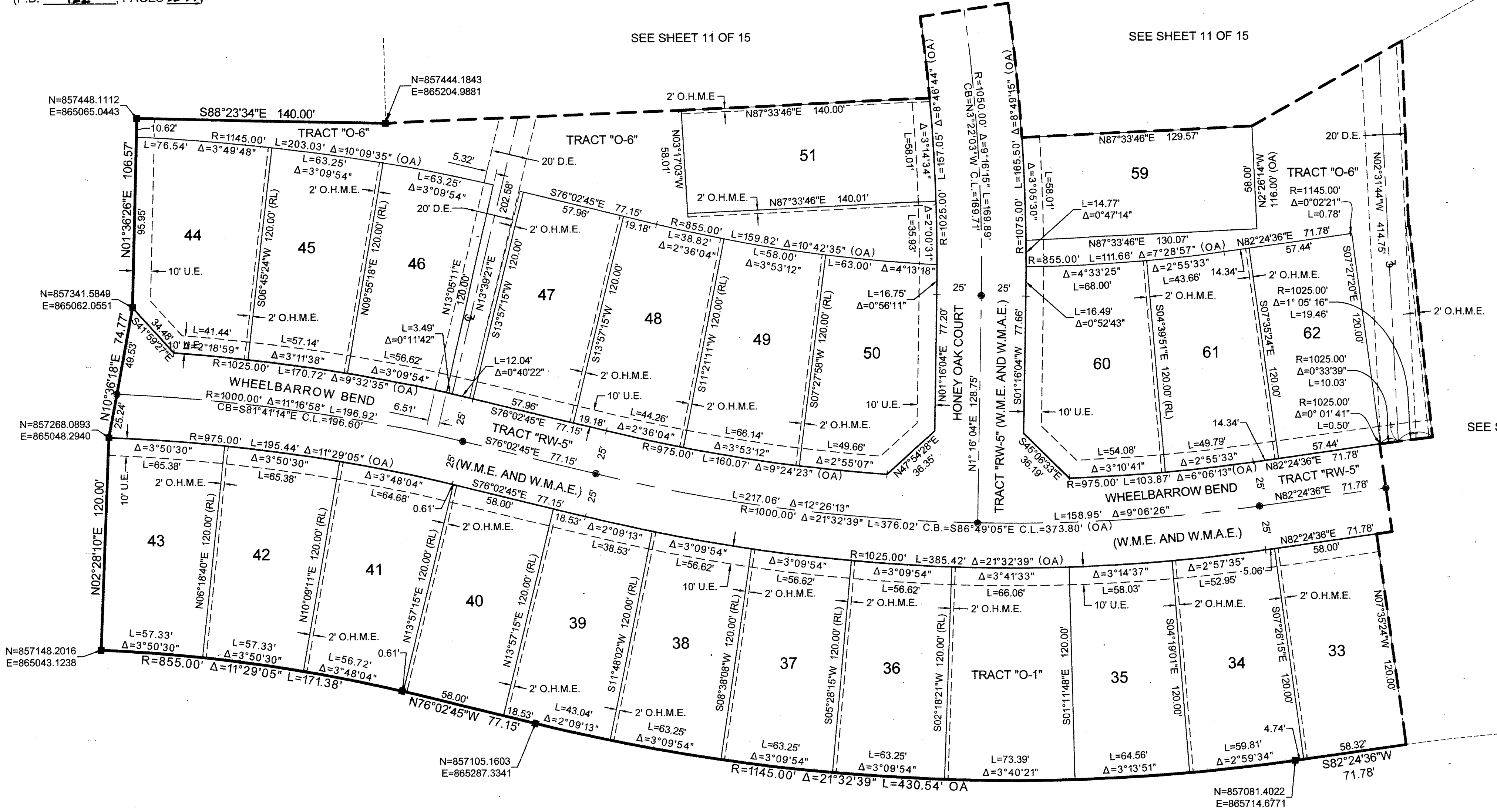
ARDEN P.U.D. POD A EAST AND POD B EAST

BEING A REPLAT OF A PORTION OF TRACT "FD", ARDEN PLAT 1, AS RECORDED IN PLAT BOOK 122, PAGES 32 THROUGH 51, PUBLIC RECORDS OF PALM BEACH COUNTY, FLORIDA, AND LYING IN SECTIONS, 28 AND 33, TOWNSHIP 43 SOUTH, RANGE 40 EAST, PALM BEACH COUNTY, FLORIDA.



COUNTY OF PALM BEACH)
 STATE OF FLORIDA) SS
 THIS PLAT WAS FILED FOR RECORD AT)
 M. THIS) DAY OF)
 2016, AND DULY)
 RECORDED IN PLAT BOOK NO.)
 ON PAGE) THRU)
 SHARON R. BOCK,
 CLERK AND COMPTROLLER
 BY: _____, D.C.

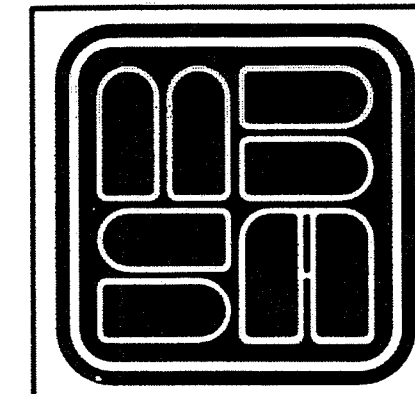
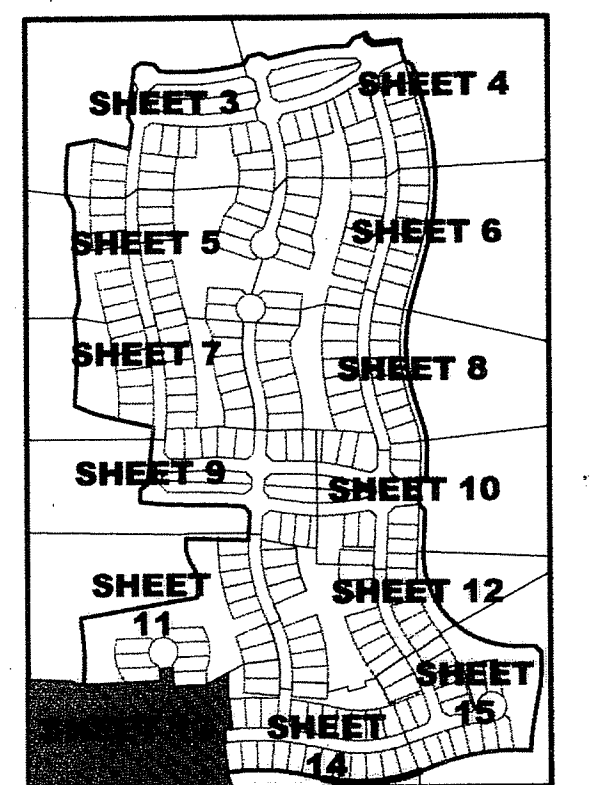
TRACT "FD"
 ARDEN PLAT 1
 (P.B. 122, PAGES 32-51)



TRACT "FD"
 ARDEN PLAT 1
 (P.B. 122, PAGES 32-51)

TRACT "FD"
 ARDEN PLAT 1
 (P.B. 122, PAGES 32-51)

TRACT "FD"
 ARDEN PLAT 1
 (P.B. 122, PAGES 32-51)



MICHAEL B. SCHORAH & ASSOCIATES, INC.
 1850 FOREST HILL BLVD., SUITE 206
 WEST PALM BEACH, FLORIDA 33406
 EG# 2438 TEL. (561) 968-0080 FAX. (561) 642-9726 LB# 2438
ARDEN P.U.D. POD A EAST AND POD B EAST